

TELSCOPE TELEHEALTH SYSTEM

TelScope is the **telehealth** product + app combination that **examines** inside the mouth and transforms any smart device into an **intraoral camera**.



EXAMINE

Examine with the TelScope illuminating depressor.

- **Remote patient monitoring:**
Device portability allows exams with homebound patients
- **Hygienically secure: Antimicrobial** handle and single-use depressors reduce risk of cross-contamination
- Improved **accuracy** in oral diagnoses, as **light source is placed directly in the mouth**
- **Rechargeable, portable** handle



CAPTURE

Capture a telehealth image or video with any smart device using the TelScope app.

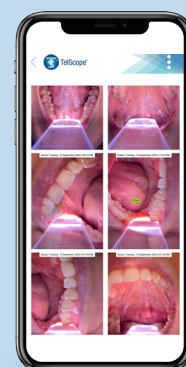
- **Universal** handle attaches to **any smart device** to pair with the **TelScope medical app**
- Transforms any smart device into an **intraoral camera** to easily capture a **superior quality intraoral image or video**
 - **Measure, circle,** and **comment** on areas of concern in the mouth



CONNECT

Connect the image or video for triaging or storage in patient file.

- **Securely connect** intraoral images for telehealth purposes
- Organize and **securely save** images for patient files



Order now at HollandHealthcareinc.com/TelScope